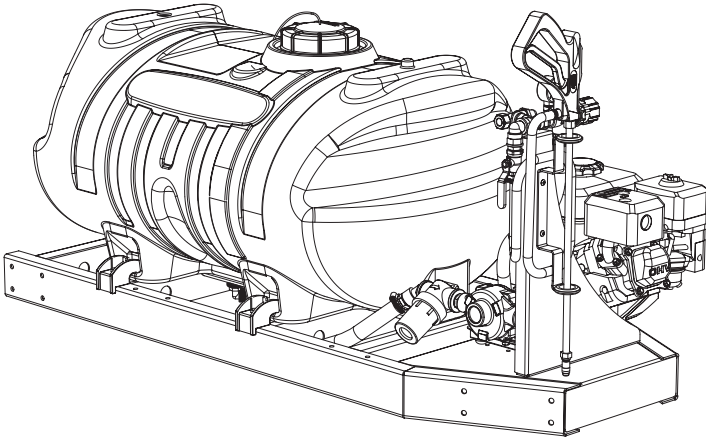


5301518
Model No. SK-61-6R-HON
60 Gallon Skid Mounted Sprayer

ASSEMBLY / OPERATION INSTRUCTIONS / PARTS



GENERAL INFORMATION

The purpose of this manual is to assist you in operating your sprayer. Please read it carefully as it furnishes information which will help you operate and maintain your sprayer.

WARRANTY / PARTS / SERVICE

Products are warranted for one year from date of purchase against manufacturer or workmanship defects.

Your authorized dealer is the best source of replacement parts and service. To obtain prompt, efficient service, always remember to give the following information.

1. Correct part description and part number.
2. Model number of your sprayer.
3. Serial number of your sprayer.

Part number and descriptions can be obtained from the illustrated parts list section of this manual. Whenever you need parts or repair service, contact your distributor / dealer first. For warranty work, always take your original sales slip, or other evidence of purchase date, to your distributor / dealer.

TECHNICAL SPECIFICATIONS

- 5.5 H.P. Recoil Start Engine
- 6 Roller Pump - 22 G.P.M. Max.
- Pressure Relief Valve
- Pressure Gauge
- Suction Line Filter
- 25 Ft. Hand Gun Hose
- Pistol Grip Spray Gun
- Optional Trailers & Boom Features Available

ASSEMBLY INSTRUCTIONS

The sprayer is completely assembled except for the pressure gauge, and the only other time any assembly is required is if you have purchased the optional trailer assembly, or optional boom assembly.

Note: Add proper oil to the engine crankcase and gasoline to the gas tank. Refer to the engine manual for the correct type and amount.

It is important to test the sprayer with plain water before actual spraying is attempted. This will enable you to check the sprayer for leaks in the plumbing system.

1. Open tank lid and be sure the tank is clean and free of foreign material. Fill the tank about half full with plain water.
2. Open the brass valve in the suction line and allow water to flow to the pump. The valve is located at this point to enable the strainer to be taken apart for cleaning.

CAUTION: Always be sure that water has reached the roller pump before starting your sprayer. If the pump is run dry, serious damage to the pump will result.

3. It is always best to start the sprayer at little or no pressure. This sprayer is equipped with a spring loaded relief valve. Turn the valve knob out to decrease pressure and in for increased pressure.
4. You may now start the sprayer engine following the engine manufacturers instructions. Let the sprayer run at low pressure until water has reached the hand gun and all air has been purged from the system.

CAUTION: Care must be taken, being sure the handgun is secured in the operators hand. If this is not done a recoiling action may occur causing damage or personal injury.



WWW.FIMCOINDUSTRIES.COM

1000 FIMCO LANE • P.O. BOX 1700 • NO. SIOUX CITY, SD 57049
TOLL FREE: 800-831-0027 • TOLL FREE FAX: 800-494-0440
Form No. 1207 (5004745 3/06) Printed In U.S.A.

TESTING THE SPRAYER

1. The pressure should now be increased to 30-125 P.S.I. Operate the sprayer at this increased pressure for 3-5 minutes, thoroughly testing the unit before adding chemicals.

AFTER SPRAYING

After use fill the sprayer part way with water, start the sprayer and allow clear water to be pumped through the plumbing system and out through handgun. Use the handgun to thoroughly wash all internal parts of tank and tank cover.

Refill the tank about half full with plain water and use a chemical neutralizer such as NUTRA-SOL or equivalent and

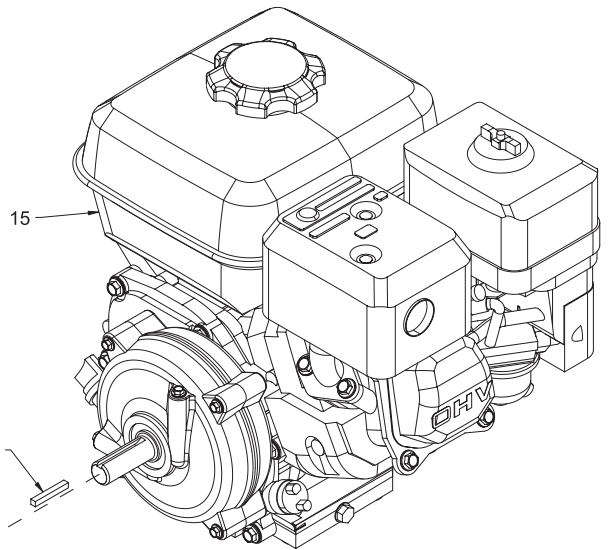
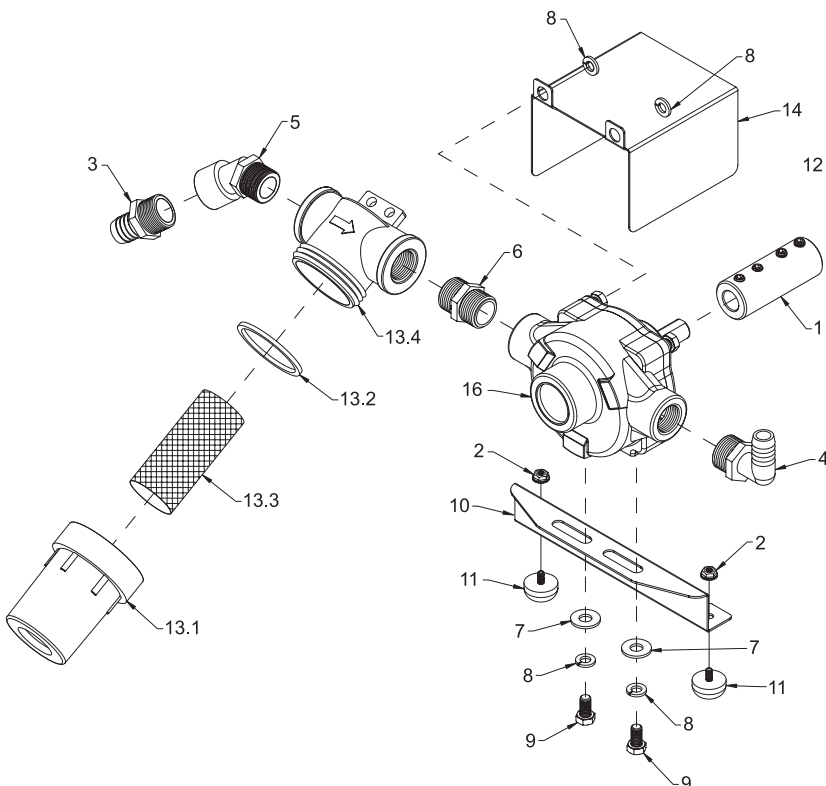
repeat cleaning instructions above. Flush the entire sprayer with the neutralizing agent. Follow the chemical manufacturers disposal instructions of all wash and rinsing water.

WINTER STORAGE

Drain all water out of the sprayer paying special attention to pump, valves, and spray gun. These items are especially prone to damage from chemicals and freezing weather.

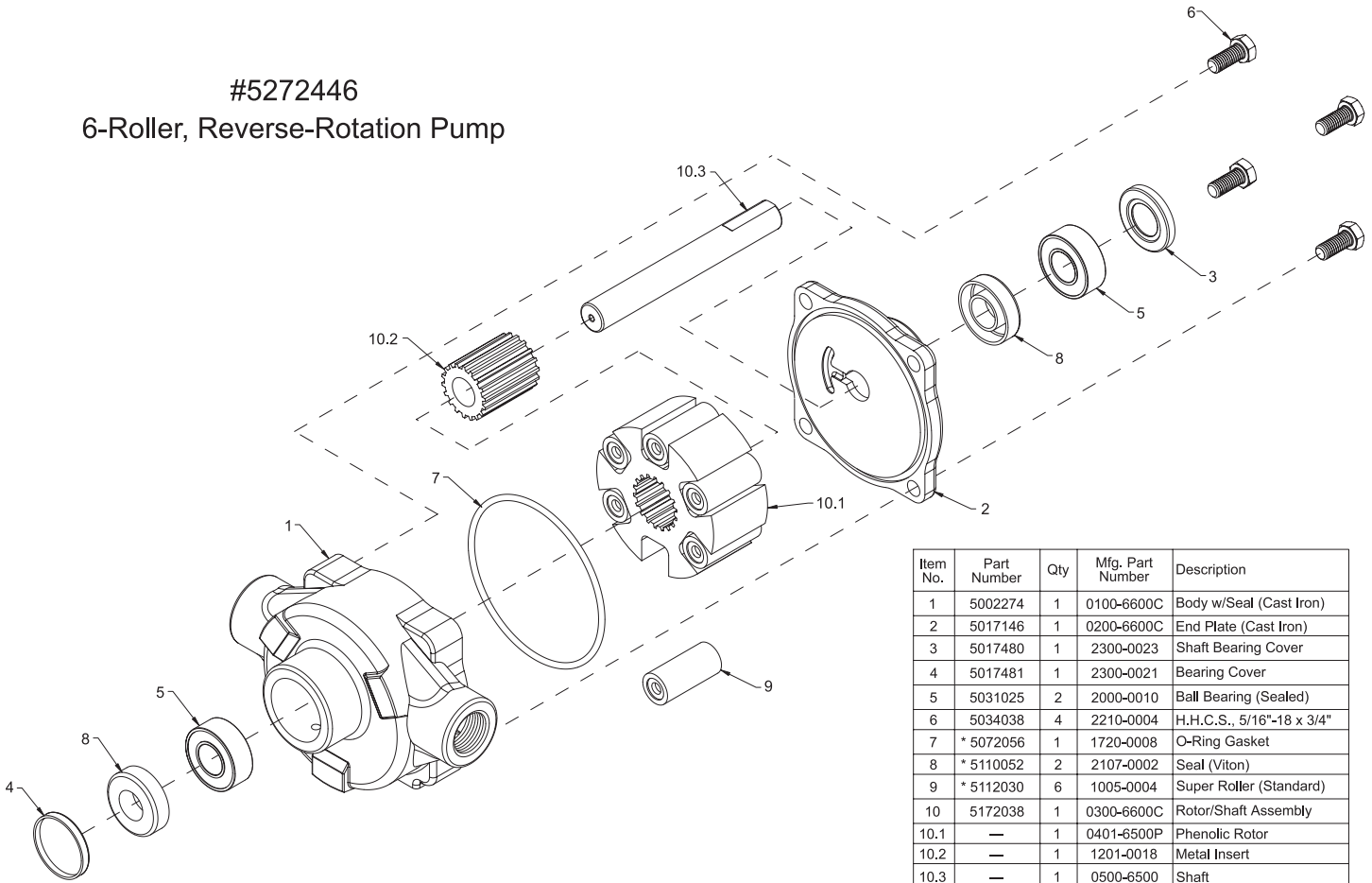
The sprayer should be winterized before storage by pumping a solution of RV anti-freeze through the entire plumbing. Proper care and maintenance will prolong the life of the sprayer.

#5275421
Engine/Pump Assembly:



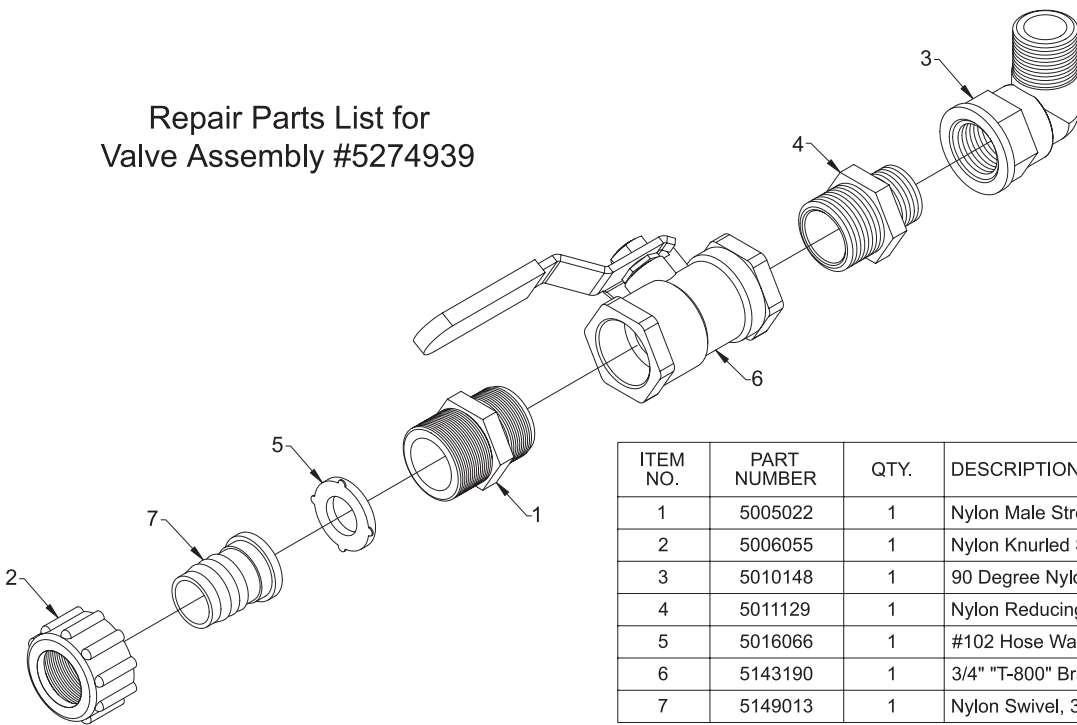
Item No.	Part Number	Qty	Description
1	5005240	1	Coupler w/Set Screws
2	5006186	2	#10-24 Hex Whiz (Flange) Locknut
3	5010020	1	Nylon Fitting, 3/4" MNPT x 3/4" HB
4	5010037	1	Nylon Elbow, 3/4" MNPT x 5/8" HB
5	5010192	1	45 Degree Nylon Street Elbow, 3/4" NPT
6	5011055	1	Nylon Close Nipple, 3/4" MNPT
7	5016020	2	Flatwasher, 5/16"
8	5016026	4	Lockwasher, 5/16"
9	5034154	2	H.H.C.S., 5/16"-18 x 5/8"
10	5038539	1	Torque Bracket
11	5040004	2	Rubber-Headed Machine Screw Bumper (#10-24)
12	5089033	1	3/16" Square Keystock x 1 3/8" Long
13	5116322	1	3/4" Black Poly Strainer
13.1	5058125	1	Strainer Bowl
13.2	5072229	1	EPDM Gasket
13.3	5116323	1	40 Mesh Screen
13.4	5046088	1	Strainer Cap
14	5120047	1	Coupler Shield
15	5152080	1	Engine, 5.5 HP (OHV) (With Gear Reduction)
16	5272446	1	Pump, 6-Roller - Reverse Rotation

#5272446
6-Roller, Reverse-Rotation Pump



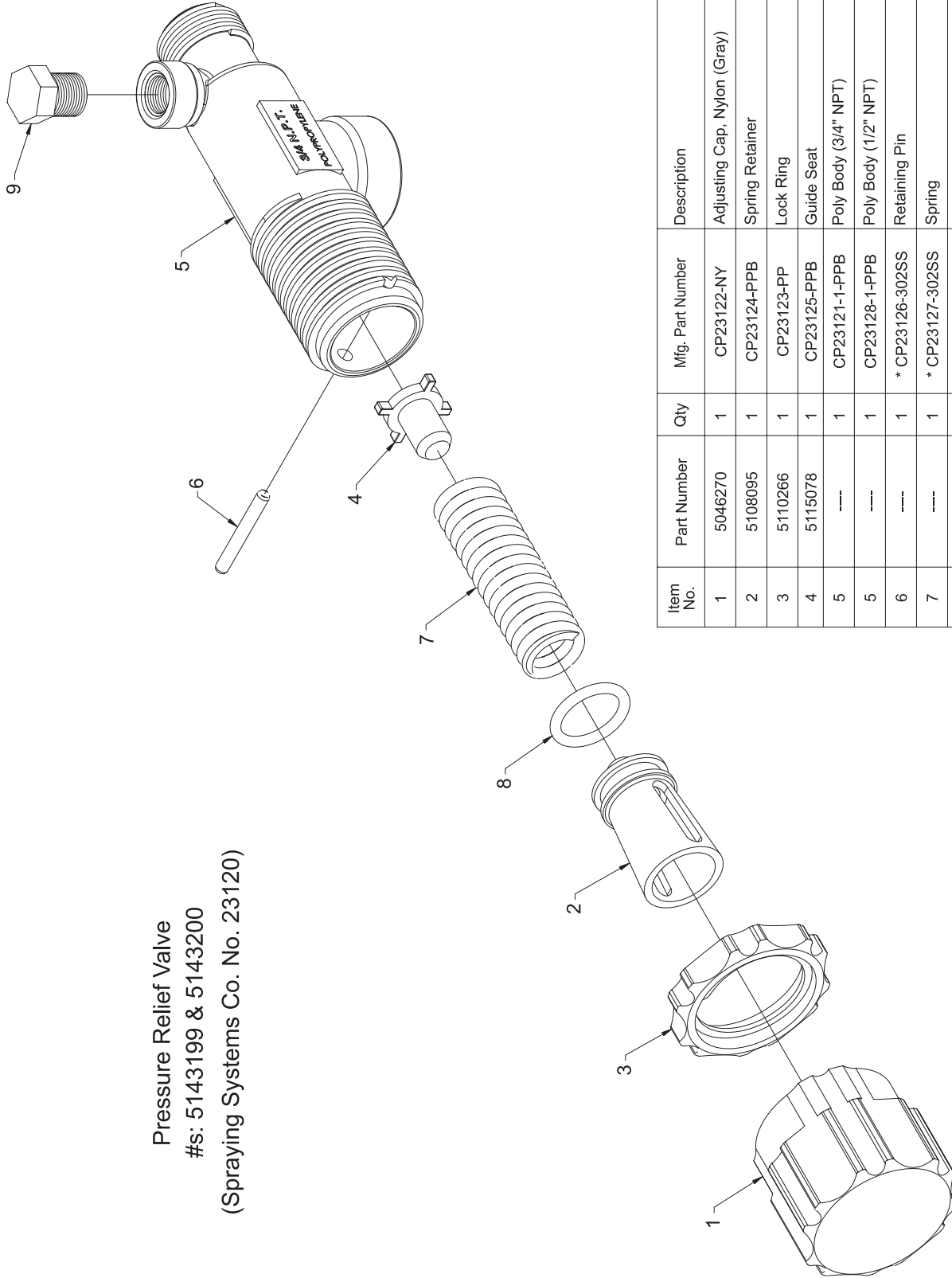
Item No.	Part Number	Qty	Mfg. Part Number	Description
1	5002274	1	0100-6600C	Body w/Seal (Cast Iron)
2	5017146	1	0200-6600C	End Plate (Cast Iron)
3	5017480	1	2300-0023	Shaft Bearing Cover
4	5017481	1	2300-0021	Bearing Cover
5	5031025	2	2000-0010	Ball Bearing (Sealed)
6	5034038	4	2210-0004	H.H.C.S., 5/16"-18 x 3/4"
7	* 5072056	1	1720-0008	O-Ring Gasket
8	* 5110052	2	2107-0002	Seal (Viton)
9	* 5112030	6	1005-0004	Super Roller (Standard)
10	5172038	1	0300-6600C	Rotor/Shaft Assembly
10.1	—	1	0401-6500P	Phenolic Rotor
10.2	—	1	1201-0018	Metal Insert
10.3	—	1	0500-6500	Shaft
	7771795		3430-0380	Repair Kit Marked *

Repair Parts List for
Valve Assembly #5274939



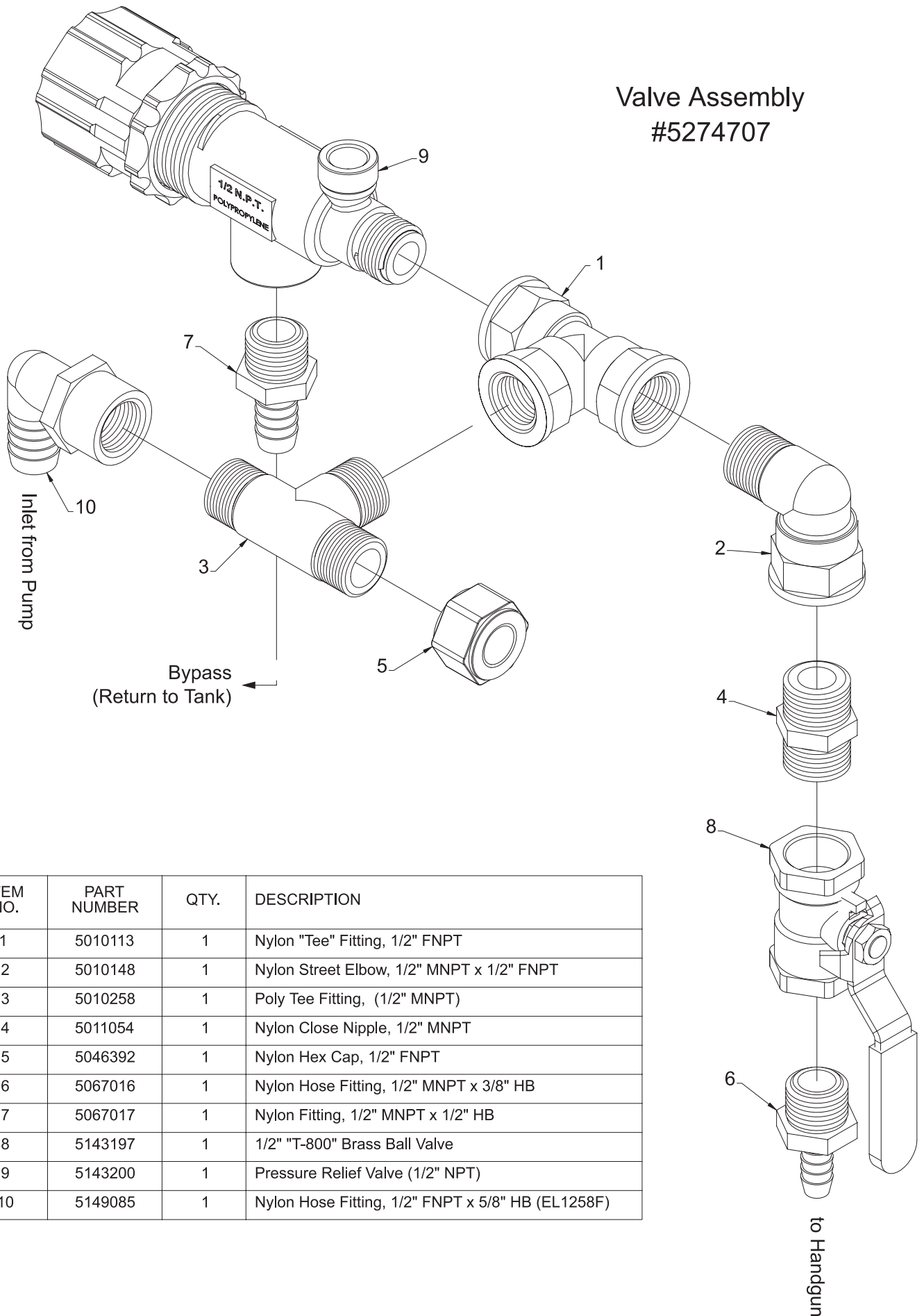
ITEM NO.	PART NUMBER	QTY.	DESCRIPTION
1	5005022	1	Nylon Male Street Adapter, 3/4" MGHT x 3/4" MNPT
2	5006055	1	Nylon Knurled Swivel Nut, 3/4" FGHT
3	5010148	1	90 Degree Nylon Street Elbow, 1/2" MNPT x 1/2" FNPT
4	5011129	1	Nylon Reducing Nipple, 3/4" MNPT x 1/2" MNPT
5	5016066	1	#102 Hose Washer (Gasket) 1" O.D. Rubber
6	5143190	1	3/4" "T-800" Brass Ball Valve
7	5149013	1	Nylon Swivel, 3/4" Flat Seat Hose Barb

Pressure Relief Valve
 #s: 5143199 & 5143200
 (Spraying Systems Co. No. 23120)



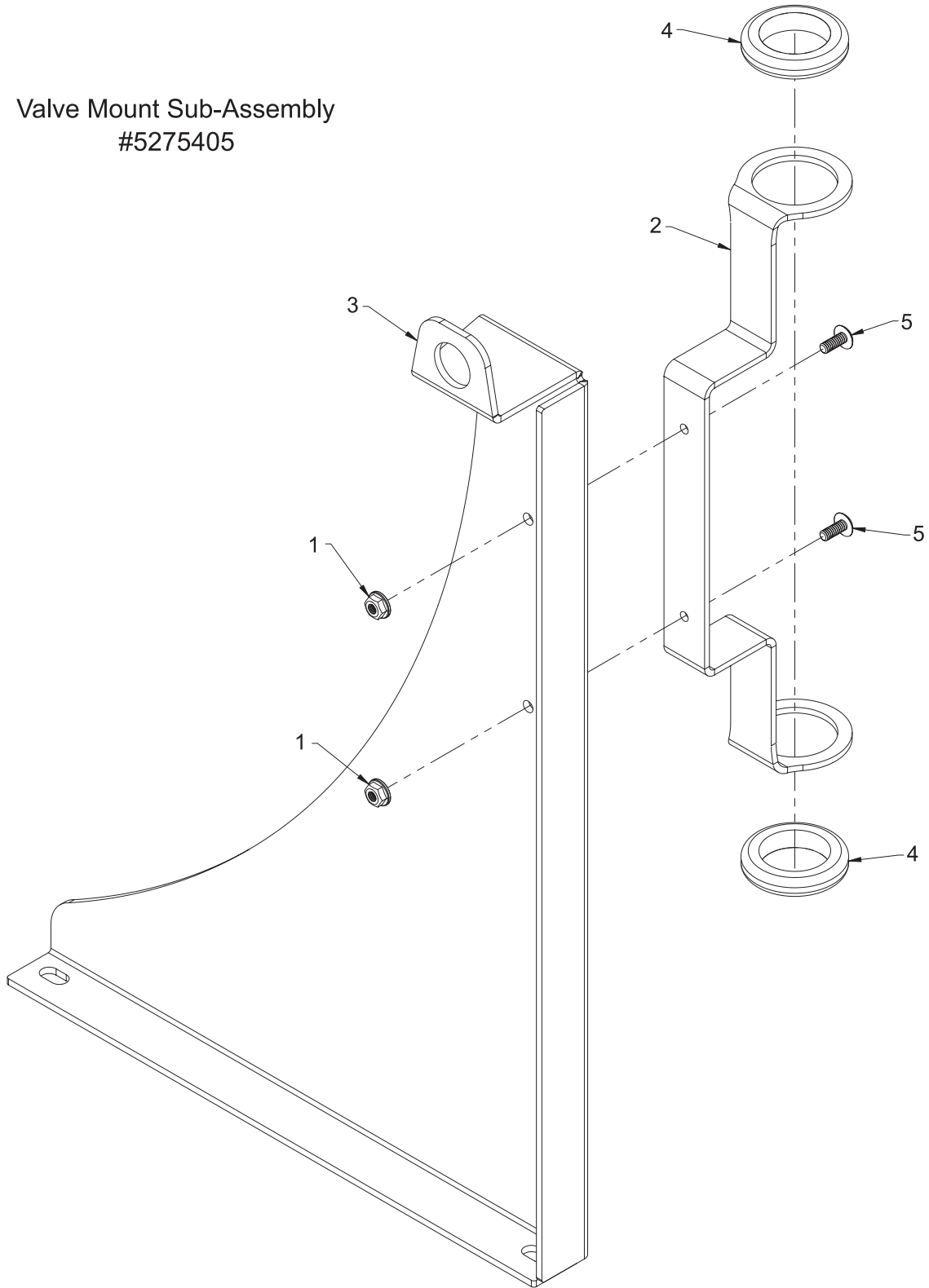
Item No.	Part Number	Qty	Mfg. Part Number	Description
1	5046270	1	CP23122-NY	Adjusting Cap, Nylon (Gray)
2	5108095	1	CP23124-PPB	Spring Retainer
3	5110266	1	CP23123-PP	Lock Ring
4	5115078	1	CP23125-PPB	Guide Seat
5	----	1	CP23121-1-PPB	Poly Body (3/4" NPT)
5	----	1	CP23128-1-PPB	Poly Body (1/2" NPT)
6	----	1	* CP23126-302SS	Retaining Pin
7	----	1	* CP23127-302SS	Spring
8	----	1	* CP7717-15-EPR	O-Ring, EPDM Rubber
9	----	1	---	Pipe Plug, 1/4" MNPT
	5143199		23120-3/4-PP	Pressure Relief Valve (3/4" Inlets & Outlets)
	5143200		23120-1/2-PP	Pressure Relief Valve (1/2" Inlets & Outlets)
	5168717		PK-AB23120-KIT	Spare Parts Kit (Included all items marked with *)

Valve Assembly #5274707



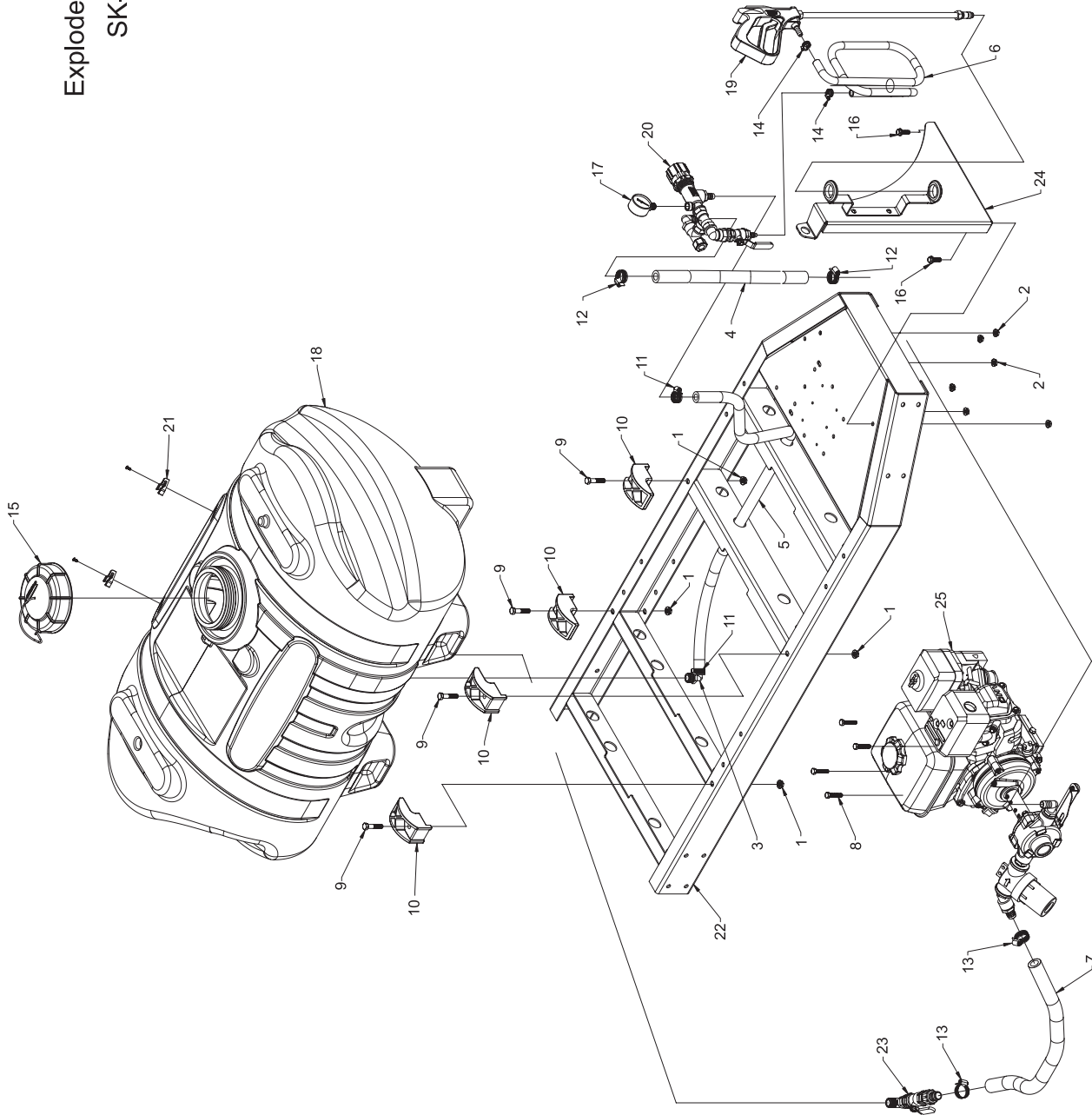
ITEM NO.	PART NUMBER	QTY.	DESCRIPTION
1	5010113	1	Nylon "Tee" Fitting, 1/2" FNPT
2	5010148	1	Nylon Street Elbow, 1/2" MNPT x 1/2" FNPT
3	5010258	1	Poly Tee Fitting, (1/2" MNPT)
4	5011054	1	Nylon Close Nipple, 1/2" MNPT
5	5046392	1	Nylon Hex Cap, 1/2" FNPT
6	5067016	1	Nylon Hose Fitting, 1/2" MNPT x 3/8" HB
7	5067017	1	Nylon Fitting, 1/2" MNPT x 1/2" HB
8	5143197	1	1/2" "T-800" Brass Ball Valve
9	5143200	1	Pressure Relief Valve (1/2" NPT)
10	5149085	1	Nylon Hose Fitting, 1/2" FNPT x 5/8" HB (EL1258F)

Valve Mount Sub-Assembly
#5275405



Item No.	Part Number	Qty	Description
1	5006186	2	#10-24 Hex Whiz (Flange) Locknut
2	5038638	1	Handgun Holder Bracket
3	5038704	1	Valve Mount Bracket
4	5075014	2	Rubber Grommet (Black)
5	5117234	2	#10-24 x 1/2" Phillips Truss Head Machine Screw

Exploded View/Parts List:
SK-61-6R-HON



Item No.	Part Number	Qty	Description
1	5006259	4	3/8"-16 Hex Whiz (Flange) Locknut
2	5006307	6	5/16"-18 Hex Whiz (Flange) Locknut
3	5010039	1	Nylon Elbow, 1/2" MNPT x 1/2" HB
4	5020077	1	Hose, 5/8"-1 Brd. x 16"
5	5020123	1	Hose, 1/2"-1 Brd. x 60"
6	5020135	1	Hose, 3/8"-1 Brd. x 25 Ft.
7	5020253	1	Hose, 3/4"-2 Brd. x 24"
8	5034069	4	H.H.C.S., 5/16"-18 x 1 1/2" (Full Thread)
9	5034101	4	H.H.C.S., 3/8"-16 x 1 3/4"
10	5038698	4	Plastic Tank Hold-Down Leg Clip
11	5051022	2	Hose Clamp, 1/2"
12	5051023	2	Hose Clamp, 5/8"
13	5051024	2	Hose Clamp, 3/4"
14	5051114	2	Hose Clamp, 3/8"
15	5058183	1	FIMCO 5" Threaded Tank Lid w/Lanyard
16	5117300	2	5/16"-18 x 1" Flange Whiz Lock Screw
17	5167004	1	Gauge, 0-200# (Dry)
18	5169209	1	60 Gallon Elliptical Tank (White)
19	5273959	1	Handgun w/X-26 Tip
20	5274707	1	Valve Assembly
21	5274880	1	Pkg. (2) Handgun Clips & (2) Screws
22	5274884	1	Skid Frame Weldment (SK-61)
23	5274939	1	Tank Valve Assembly
24	5275405	1	Valve Mount Sub-Assembly
25	5275421	1	Engine/Pump Assembly