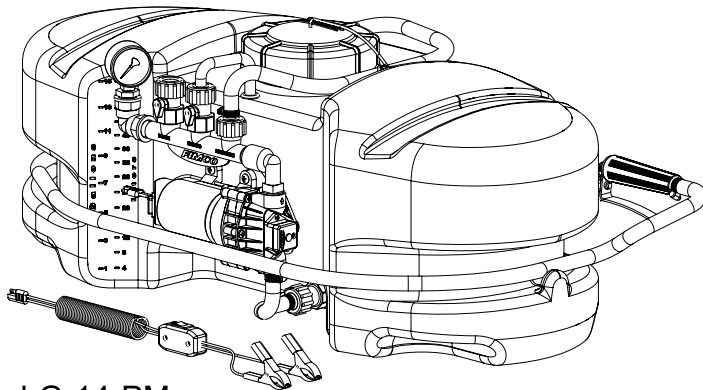


5301144
MODEL NO. LG-14-PM

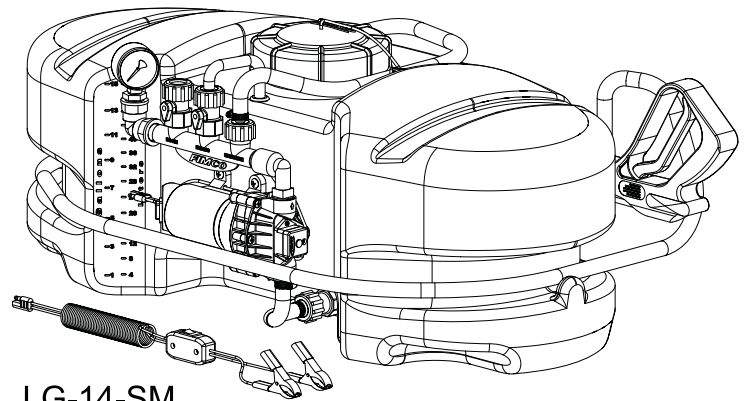
5301145
MODEL NO. LG-14-SM

15 Gallon Lawn & Garden Spot Sprayers

Assembly / Operation Instructions / Parts



LG-14-PM



LG-14-SM

**BEFORE RETURNING THIS PRODUCT
FOR ANY REASON, PLEASE CALL**

1-800-831-0027

**IF YOU SHOULD HAVE A QUESTION OR
EXPERIENCE A PROBLEM WITH YOUR
FIMCO INDUSTRIES PRODUCT:**

1-800-831-0027

**BEFORE YOU CALL, PLEASE HAVE THE
FOLLOWING INFORMATION AVAILABLE:
SALES RECEIPT & MODEL NUMBER. IN MOST
CASES, A FIMCO INDUSTRIES EMPLOYEE CAN
RESOLVE THE PROBLEM OVER THE PHONE.**

Your authorized dealer is the best source of replacement parts and service. To obtain prompt, efficient service, always remember to give the following information:

1. Correct part description and part number.
2. Model Number of your sprayer.
3. Serial Number of your sprayer.

Part description and part numbers can be obtained from the illustrated parts list section of this manual.

Whenever you need parts or repair service, contact your distributor / dealer first. For warranty work always take your original sales slip, or other evidence of purchase date, to your distributor / dealer.

GENERAL INFORMATION

The purpose of this manual is to assist you in operating and maintaining your lawn and garden sprayer. Please read it carefully as it furnishes information which will help you achieve years of dependable trouble free operation.

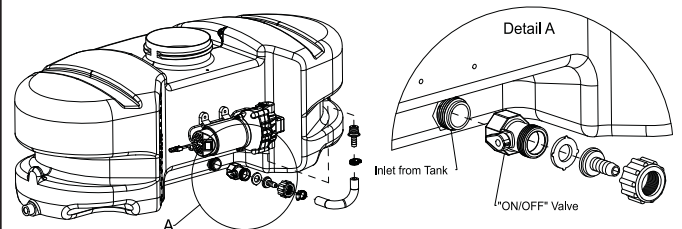
STOP

WARNING

STOP

**DO NOT USE PUMP IN AN EXPLOSIVE
ENVIRONMENT. DO NOT USE TO PUMP
FLAMMABLE FLUIDS, GASOLINE,
KEROSENE FUEL, OIL, ETC.**

IMPORTANT REMINDER



This unit comes with an On/Off valve located near the inlet of the tank, towards the underside. (See Detail A). You must make sure the valve is in the "open" position before using your unit.

FIMCO
INDUSTRIES

WARRANTY / PARTS / SERVICE

Products are warranted for one year from date of purchase against manufacturer or workmanship defects.

WWW.FIMCOINDUSTRIES.COM

1000 FIMCO LANE • P.O. BOX 1700 • NO. SIOUX CITY, SD 57049
TOLL FREE: 800-831-0027 • TOLL FREE FAX: 800-494-0440
Form No. 1310 (5004804 4/07) Printed In U.S.A.

TECHNICAL SPECIFICATIONS

- Corrosion Resistant Polyethylene Tank.
- 12 Volt Diaphragm Pump.
- Pressure Gauge-Adjustable Pressure Range.
- 15 Foot Handgun Hose.

CAUTION: Always check the vehicle load rating before using this sprayer. The loaded weight of the sprayer and boom assembly is about 170 lbs. when the tank is full for a 15 gallon unit and 250 lbs. for a 25 gallon unit. It is important to test the sprayer with plain water before actual spraying is attempted. This will enable you to check the sprayer for leaks in the plumbing system.

ASSEMBLY





1. Thread the gauge into the reducing bushing at the end of the manifold assembly. Use a good grade of thread sealant here to insure no leaks.
2. Connect the wiring harness to the wires coming out of the pump. Connect the wiring from the wiring assembly to the 12 Volt power source of the vehicle. The red wire of the 2-wire set must be connected to the positive (+) post on the battery or the "hot" connection on a switch or to the ammeter. The brown wire may be grounded or connected to the negative (-) post on the battery.
3. Remove the drain plug assembly from the parts bag and thread it onto the drain bung located at the lower rear end of the tank.
4. Remove the handgun clips/screws from the parts bag, if applicable, and attach them to the side of the tank, for handgun storage.

OPERATION

The pump on the sprayer is equipped with a pressure switch that is factory set at a maximum of 60 PSI. Pressure may be decreased by opening the regulating valve. The more it is opened, the lower the pressure will be.

The handgun has an adjustable nozzle which allows the spray to be adjusted from a cone shaped fine mist to a straight stream. It is normal for the pump to cycle when spraying with a fine mist spray.

WARNING: Some chemicals will damage the pump valves if allowed to soak untreated for a length of time. Always flush the pump with water after use. Do not allow chemicals to sit in pump for extended times of idleness. Follow the chemical manufactures instructions on disposal of all waste water from the sprayer.

  CAUTION  
PRESSURE SWITCH OPERATION Pressure switch is pre-set at the factory. Improper adjustment of the pressure switch, may cause severe overload or premature failure. If the pump is subjected to rapid cycling during normal operation, or infrequent periods, damage may occur.

AFTER SPRAYING

After use fill the sprayer part way with water, start the sprayer and allow clear water to be pumped through the plumbing system and out through the handgun. Use the handgun on the sprayer to thoroughly wash all internal parts of the tank and tank cover.

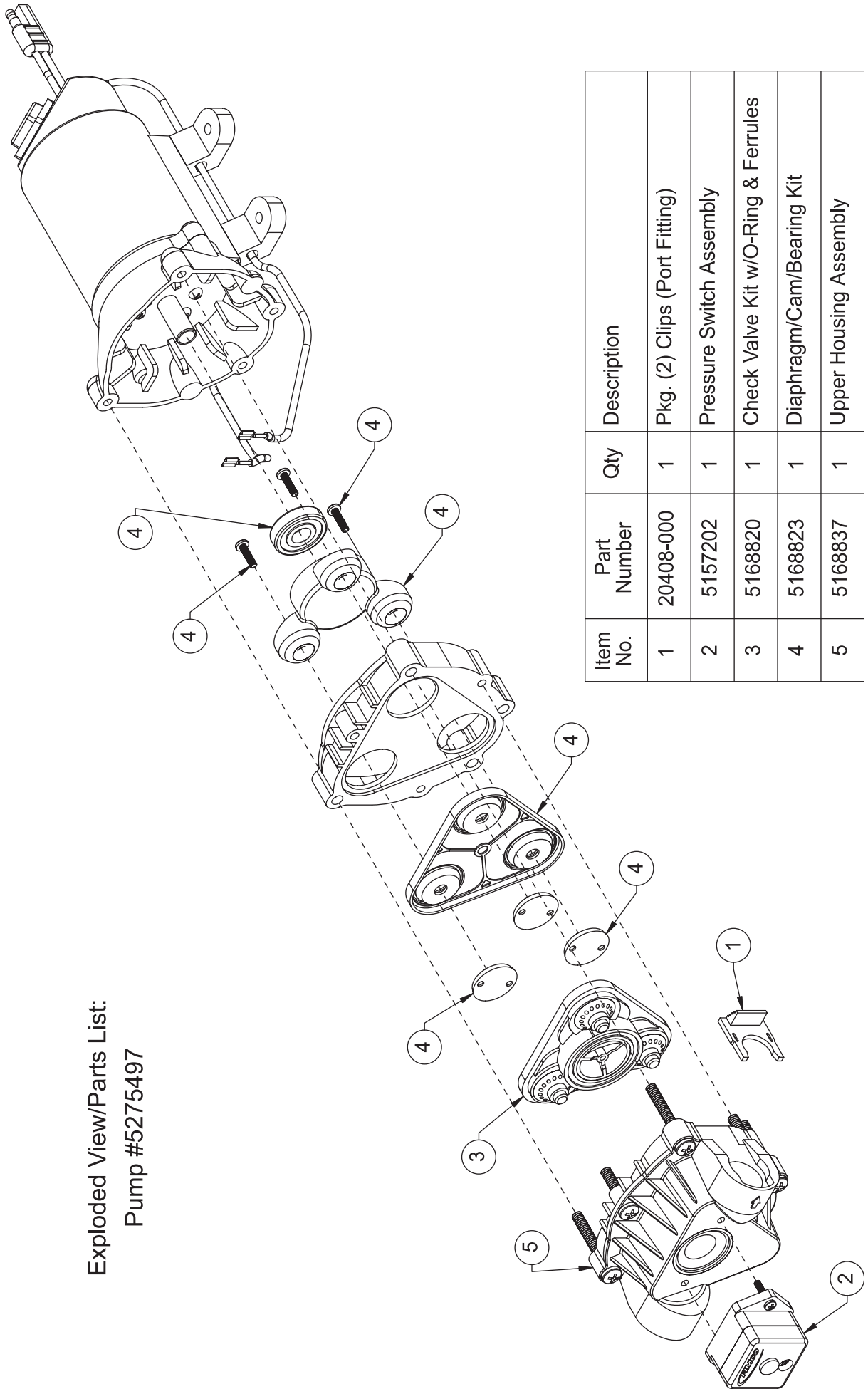
Refill the tank about half full with plain water and use a chemical neutralizer such as Nutra-Sol or equivalent and repeat cleaning instructions above. Flush the entire sprayer with the neutralizing agent. Follow the chemical manufacturers disposal instructions of all wash or rinsing water.

WINTER STORAGE

Drain all water out of sprayer paying special attention to pump, valves, and handgun. These items are especially prone to damage from chemicals and freezing weather.

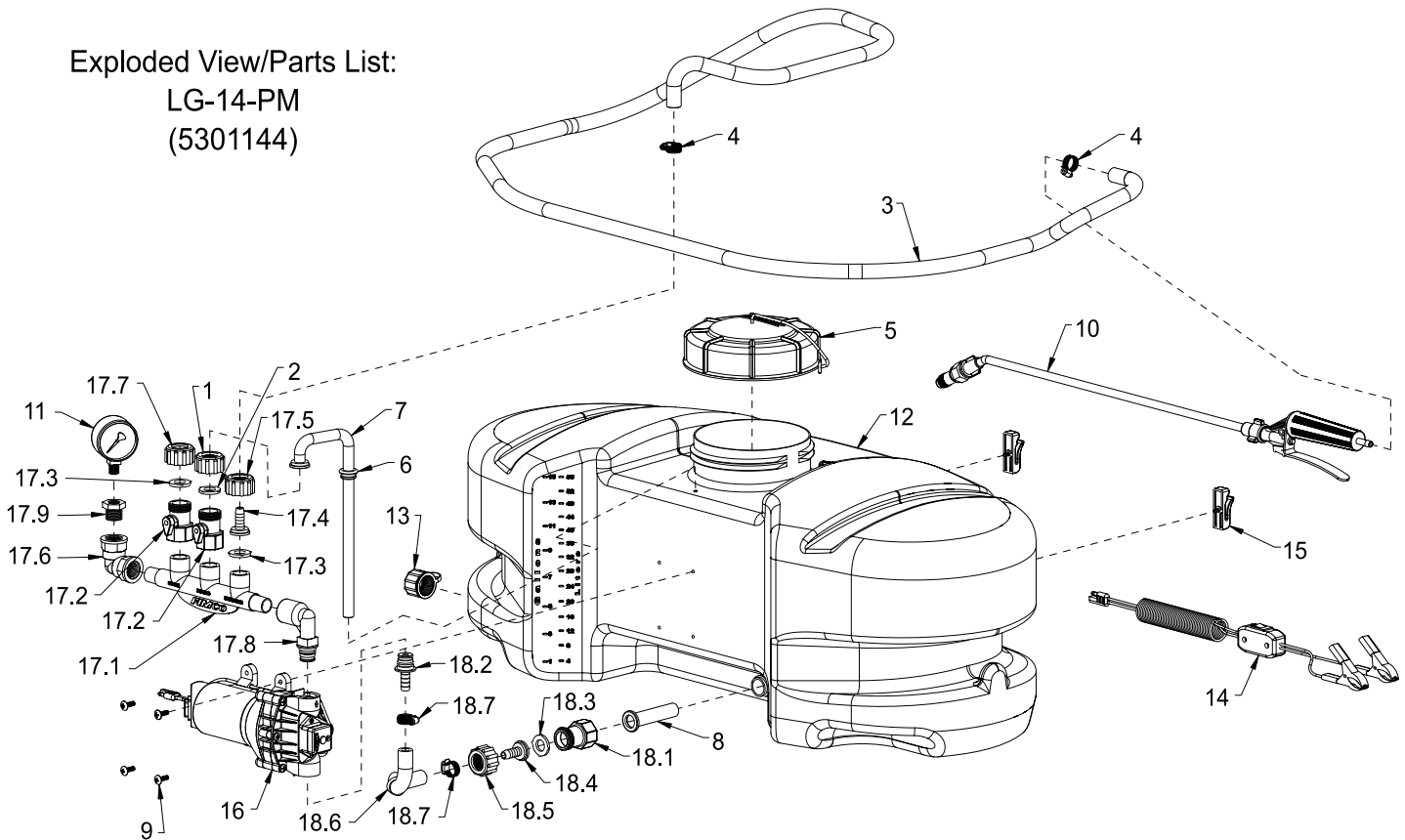
The sprayer should be winterized before storage by pumping a solution of R.V. anti-freeze through the entire plumbing. Proper care and maintenance will prolong the life of the sprayer.

Exploded View/Parts List:
Pump #5275497



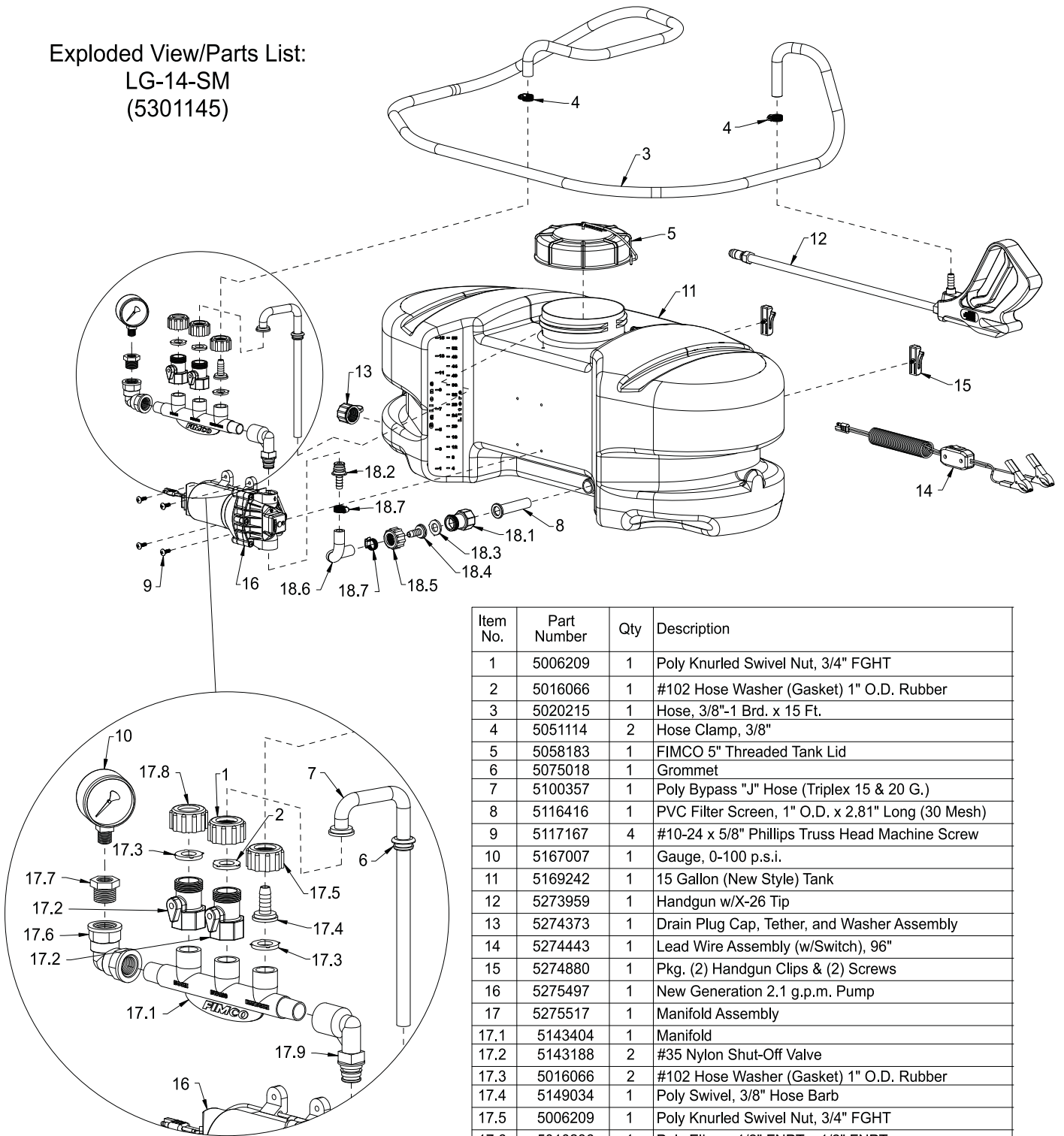
Item No.	Part Number	Qty	Description
1	20408-000	1	Pkg. (2) Clips (Port Fitting)
2	5157202	1	Pressure Switch Assembly
3	5168820	1	Check Valve Kit w/O-Ring & Ferrules
4	5168823	1	Diaphragm/Cam/Bearing Kit
5	5168837	1	Upper Housing Assembly

Exploded View/Parts List:
 LG-14-PM
 (5301144)



Item No.	Part Number	Qty	Description
1	5006209	1	Poly Knurled Swivel Nut, 3/4" FGHT
2	5016066	1	#102 Hose Washer (Gasket) 1" O.D. Rubber
3	5020215	1	Hose, 3/8"-1 Brd. x 15 Ft.
4	5051114	2	Hose Clamp, 3/8"
5	5058183	1	FIMCO 5" Threaded Tank Lid
6	5075018	1	Grommet
7	5100357	1	Poly Bypass "J" Hose (Triplex 15 & 20 G.)
8	5116416	1	PVC Filter Screen, 1" O.D. x 2.81" Long (30 Mesh)
9	5117167	4	#10-24 x 5/8" Phillips Truss Head Machine Screw
10	5163100	1	Low-Flow Handgun w/X-26 Tip
11	5167007	1	Gauge, 0-100 p.s.i.
12	5169242	1	15 Gallon (New Style) Tank
13	5274373	1	Drain Plug Cap, Tether, and Washer Assembly
14	5274443	1	Lead Wire Assembly (w/Switch), 96"
15	5274880	1	Pkg. (2) Handgun Clips & (2) Screws
16	5275497	1	New Generation 2.1 g.p.m. Pump
17	5275517	1	Manifold Assembly
17.1	5143404	1	Manifold
17.2	5143188	2	#35 Nylon Shut-Off Valve
17.3	5016066	2	#102 Hose Washer (Gasket) 1" O.D. Rubber
17.4	5149034	1	Poly Swivel, 3/8" Hose Barb
17.5	5006209	1	Poly Knurled Swivel Nut, 3/4" FGHT
17.6	5010236	1	Poly Elbow, 1/2" FNPT x 1/2" FNPT
17.7	5046375	1	Poly Knurled Threaded Cap, (3/4" FGHT)
17.8	5010430	1	Port Kit Elbow, 1/2" FNPT
17.9	5041073	1	Poly Reducing Bushing, 1/2" MNPT x 1/4" FNPT
18	5275544	1	Intake Sub-Assembly (2.1 Pump on 15 Gal. Units)
18.1	5143188	1	#35 Nylon Shut-Off Valve
18.2	5168836	1	Port Kit Fitting, 3/8" Hose Barb
18.3	5016066	1	#102 Hose Washer (Gasket) 1" O.D. Rubber
18.4	5149034	1	Poly Swivel, 3/8" Hose Barb
18.5	5006209	1	Poly Knurled Swivel Nut, 3/4" FGHT
18.6	5020489	1	Hose, 3/8"-1 Brd. x 5"
18.7	5051114	2	Hose Clamp, 3/8"

Exploded View/Parts List:
 LG-14-SM
 (5301145)



Item No.	Part Number	Qty	Description
1	5006209	1	Poly Knurled Swivel Nut, 3/4" FGHT
2	5016066	1	#102 Hose Washer (Gasket) 1" O.D. Rubber
3	5020215	1	Hose, 3/8"-1 Brd. x 15 Ft.
4	5051114	2	Hose Clamp, 3/8"
5	5058183	1	FIMCO 5" Threaded Tank Lid
6	5075018	1	Grommet
7	5100357	1	Poly Bypass "J" Hose (Triplex 15 & 20 G.)
8	5116416	1	PVC Filter Screen, 1" O.D. x 2.81" Long (30 Mesh)
9	5117167	4	#10-24 x 5/8" Phillips Truss Head Machine Screw
10	5167007	1	Gauge, 0-100 p.s.i.
11	5169242	1	15 Gallon (New Style) Tank
12	5273959	1	Handgun w/X-26 Tip
13	5274373	1	Drain Plug Cap, Tether, and Washer Assembly
14	5274443	1	Lead Wire Assembly (w/Switch), 96"
15	5274880	1	Pkg. (2) Handgun Clips & (2) Screws
16	5275497	1	New Generation 2.1 g.p.m. Pump
17	5275517	1	Manifold Assembly
17.1	5143404	1	Manifold
17.2	5143188	2	#35 Nylon Shut-Off Valve
17.3	5016066	2	#102 Hose Washer (Gasket) 1" O.D. Rubber
17.4	5149034	1	Poly Swivel, 3/8" Hose Barb
17.5	5006209	1	Poly Knurled Swivel Nut, 3/4" FGHT
17.6	5010236	1	Poly Elbow, 1/2" FNPT x 1/2" FNPT
17.7	5041073	1	Poly Reducing Bushing, 1/2" MNPT x 1/4" FNPT
17.8	5046375	1	Poly Knurled Threaded Cap, (3/4" FGHT)
17.9	5010430	1	Port Kit Elbow, 1/2" FNPT
18	5275544	1	Intake Sub-Assembly (2.1 Pump on 15 Gal. Units)
18.1	5143188	1	#35 Nylon Shut-Off Valve
18.2	5168836	1	Port Kit Fitting, 3/8" Hose Barb
18.3	5016066	1	#102 Hose Washer (Gasket) 1" O.D. Rubber
18.4	5149034	1	Poly Swivel, 3/8" Hose Barb
18.5	5006209	1	Poly Knurled Swivel Nut, 3/4" FGHT
18.6	5020489	1	Hose, 3/8"-1 Brd. x 5"
18.7	5051114	2	Hose Clamp, 3/8"