

# MOJACK™ ASSEMBLY INSTRUCTIONS FOR MJ-48, MJ-60 AND MJ-72

Hardware List = HL

Parts List = PL

## STEP 1

Place four 10mm x 65mm carriage bolts (HL #1), threads facing up, through four holes on base (PL A). Make sure the side of the base with spacers is facing down.

Place tower (PL B) on top of base by sliding holes through carriage bolts already inserted in base. The wheel mounts of the tower must face away from inside of the base.

Take four 10mm hex head nuts (HL #2) and securely tighten carriage bolts using a 17mm wrench.

## STEP 2

Place winch (PL C) on top of tower. Take 8mm x 25mm hex head bolt (HL #3), threads facing up, and secure front of winch to tower using 8mm washers (HL #4) and 8mm hex head nut (HL #5). Secure nut and bolt with 13mm and 14mm wrench.

On back right side of winch, take 8mm x 25mm hex head bolt (HL #3), threads facing down, and secure back of winch to tower using 8mm washers (HL #4) and 8mm hex head nut (HL #5). Secure nut and bolt with 13mm and 14mm wrench.

On left side of winch, take final 8mm x 25mm hex head bolt (HL #3), threads facing up, and secure back of the winch to tower using washer attached to safety chain (HL #6), 8mm washer (HL #4) and 8mm hex head nut (HL #5). Secure nut and bolt the 13mm and 14mm wrench.

## STEP 3

Attach winch handle by unscrewing bolt attached to winch and remove washer. Place winch handle on stem, place washer on stem and then secure bolt on stem with 18mm wrench.

## STEP 4

Take jack stand (PL D) and secure it to base by using 6mm x 85mm bolts (HL #7), 6mm washers (HL #8) and 6mm hex head nuts (HL #9). Make sure threaded end of bolt is towards the inside of base. Mitered corner of jack stand needs to face towards tower. Secure nut and bolt using two 10mm wrenches.

## STEP 5

Place jack stand inserts (PL E) into jack stand. The jack stand inserts are adjustable but must be secured with spring pin (HL #10).

## STEP 6

Secure T-Bar (PL F) to tower by placing T-Bar's vertical pieces around tower. Place rollers (HL #11) in between vertical pieces on T-Bar and secure them by using 10mm x 80mm shoulder bolts (HL #12), 10mm washers (HL #13), 8mm washer (HL #4) and 8mm hex head nuts (HL #5). Secure nut and shoulder bolt using 8mm hex key and 13mm wrench.

## STEP 7

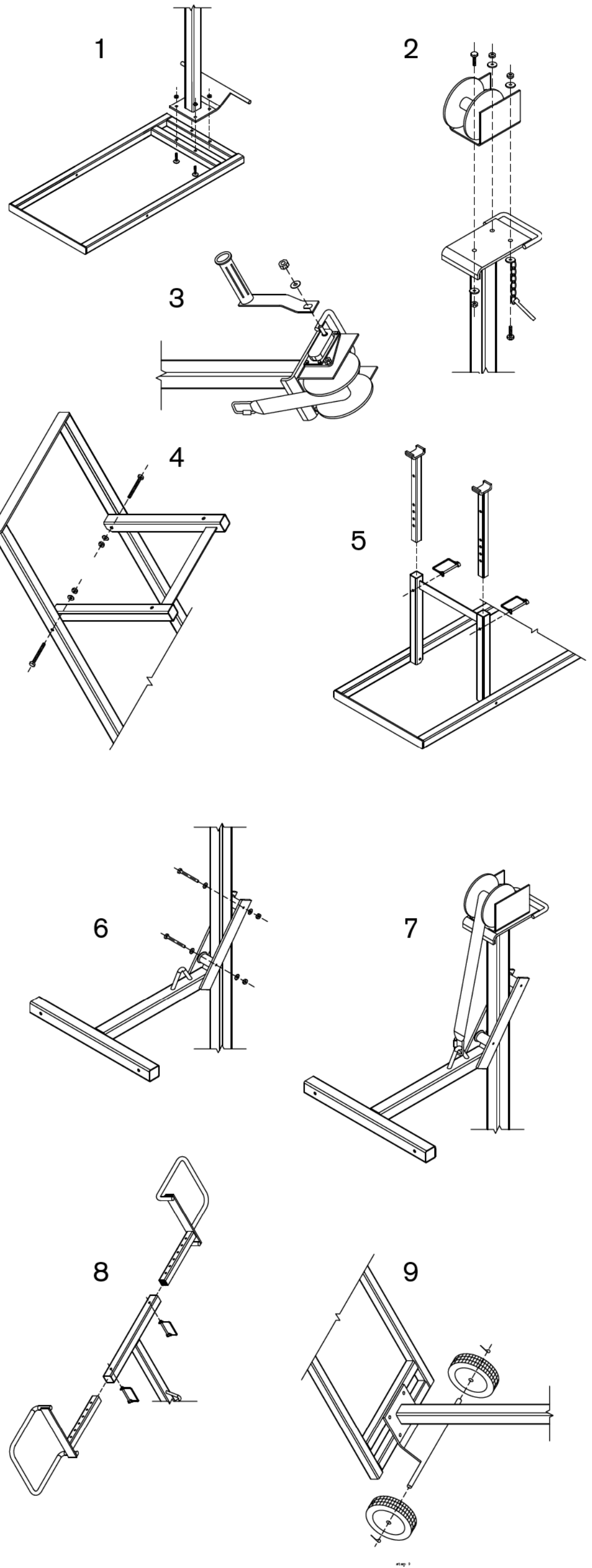
Place quick link (HL #14) through end of lifting strap attached to winch, lower winch by turning handle counter clockwise until quick link reaches T-Bar. Secure quick link to T-Bar by placing quick link opening through triangle loop of T-Bar and tighten quick link.

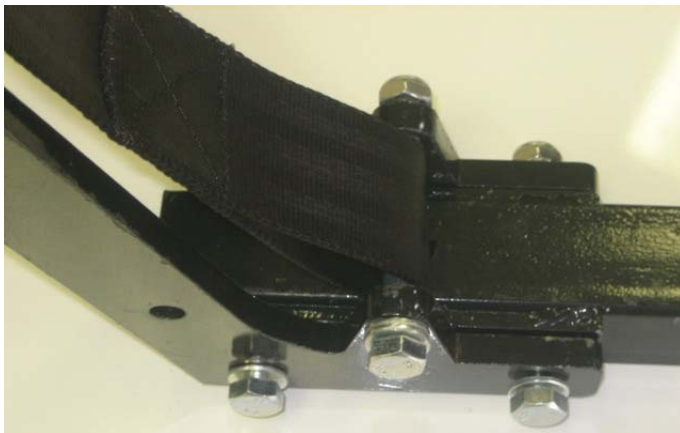
## STEP 8

Place wheel pads (PL G) into T-Bar and secure them using spring pin (HL #10). Face long end of wheel pad loop away from winch.

## STEP 9

Place wheels (PL H) onto axles attached to tower and secure using 2mm x 45mm cotter pins (HL #15).





### **REVISION TO THE T-BAR ASSEMBLY**

The Eye Bolt (Item 17) and Belt Connector (Item 4) are No Longer Required for Assembly.

Attach Lifting Strap from Winch Spool to the T-Bar Using Hex Bolt (Item 23), Washers (Item 7) and Hex Nut (Item 5)