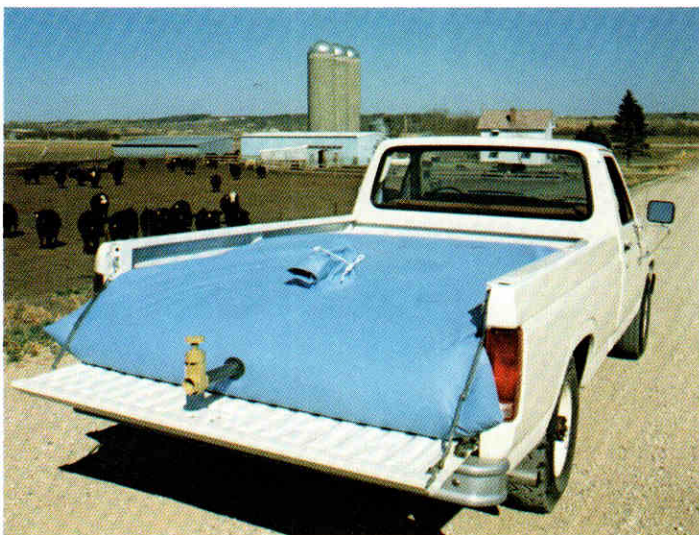


# BURCH

MANUFACTURING COMPANY, INC.

## The Easy, Economical Way to Store or Haul Liquids



**Multiple Uses.** Ideal for feeding livestock, crop spraying, mixing fertilizer, pesticides or herbicides, the Burch Kolaps-A-Tank is at home on the farm or ranch.

For parks, nurseries — anywhere water sources are scarce, the Kolaps-A-Tank provides a mobile, reliable source of water. Plus it's FDA approved for drinking water for human consumption.

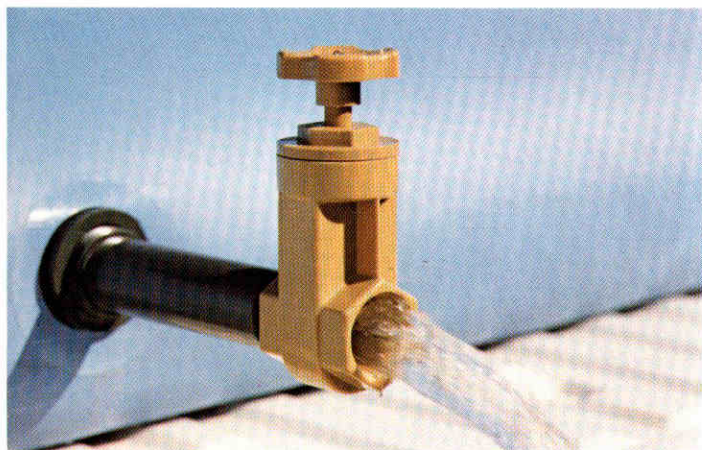
**Unmatched Economy.** The Kolaps-A-Tank is the least expensive means devised to haul liquids on virtually any vehicle you have available. Initial cost is substantially lower than any comparable fiberglass or poly tank on the market. For value, you can't beat the Kolaps-A-Tank. The first tanks made are still in the field after years of outstanding service.

**kolaps**  
**BURCH** a-tank

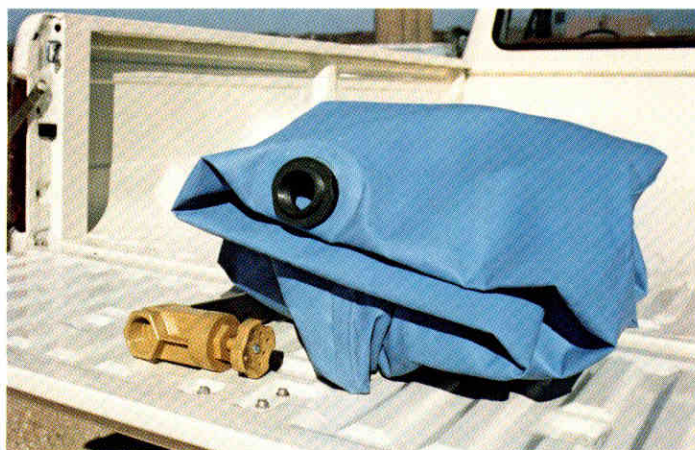
**Superior Strength.** Made of rugged PVC (polyvinyl chloride) coated nylon, the Kolaps-A-Tank resists chemical contamination, mildew, rot, and solar heat exposure.

It's electronically heat sealed and capable of withstanding severe outdoor exposure, including -40° temperatures!

**Versatile Capacity.** The Burch Kolaps-A-Tank can be handled easily by one man and yet holds from 525 to 1340 gallons! It can be filled and emptied in minutes with a centrifugal force pump or drained by gravity flow. Seven sizes are available to fit pickups and many standard wagon boxes. On hayracks, the Kolaps-A-Tank is self-supporting. Just thread rope over tank, through D-ring guides, and tie down.



**Convenient to Fill, Drain** Quality 1½" gate valve is mounted on 8" PVC extension pipe for easy draining. Big 10" diameter flexible sleeve on top makes tank simple to fill.



**Compact, Easy to Store** Even the largest Kolaps-A-Tank can be folded up and stored in an 18" x 18" x 18" carton.

## SPECIFICATIONS

| Model No.        | Approximate Size                       | Gals. | Liters | Approx. Shipping Wt. |      |
|------------------|--|-------|--------|----------------------|------|
|                  |  |       |        | Lbs.                 | KG   |
| 200848 FDA 50MT  | 40" x 50" x 12" (102cm x 127cm x 30cm) | 73    | 276    | 11                   | 5    |
| 200850 FDA 73MT  | 80" x 73" x 16" (203cm x 185cm x 41cm) | 275   | 1040   | 23                   | 10.4 |
| 200852 FDA 98MT  | 65" x 98" x 18" (165cm x 249cm x 46cm) | 525   | 1987   | 33                   | 15   |
| 200854 FDA 610MT | 6' x 10' x 2' (1.83m x 3.05m x .61m)   | 800   | 3028   | 42                   | 19.1 |
| 200856 FDA 712MT | 7' x 12' x 2' (2.13m x 3.66m x .61m)   | 1140  | 4315   | 58                   | 26.3 |
| 200858 FDA 714MT | 7' x 14' x 2' (2.13m x 4.27m x .61m)   | 1340  | 5072   | 64                   | 29   |
| FDA 812MT        | 8' x 12' x 2' (2.44m x 3.66m x .61m)   | 1320  | 4996   | 64                   | 29   |

FDA-approved models meet Food and Drug Administration 21CFR121.2514 of subpart F of the Food Additive Regulation, making it safe for drinking water used for human consumption.

### From covered wagons to turkey saddles . . .

Burch Manufacturing has been making quality textile products for agriculture, industry, and more for almost 100 years. If a product you need can be made of canvas or vinyl coated nylon — chances are we can sew it, heat seal it, or silkscreen it. Send us your specifications and we'll be happy to provide you with a free estimate.

### Sales and Service:

**BURCH**  
MANUFACTURING COMPANY, INC.

618 First Avenue North Box 876  
Fort Dodge, Iowa 50501

5. In the event of puncture or tear, the Kolaps-A-Tank can be easily repaired with a repair kit, which includes vinyl adhesive and patches. 200865
6. Before storing your Kolaps-A-Tank, make sure that it is clean, dry and out of reach of rodents. This will help to lengthen the life of your tank. (See figure D)

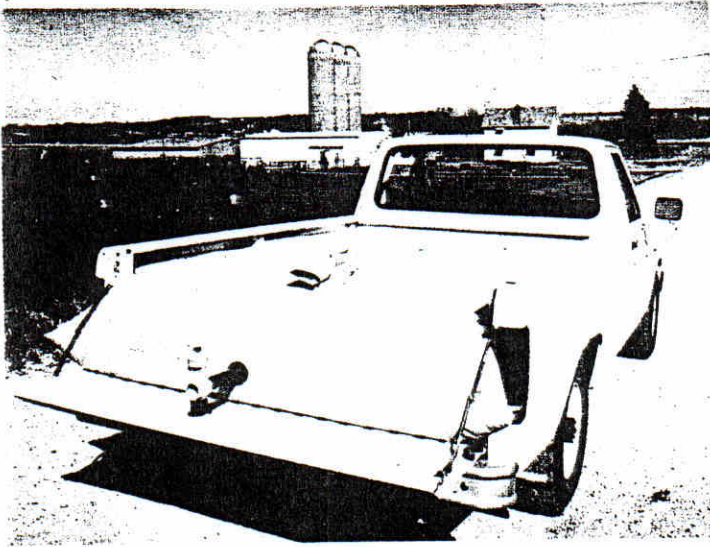


Fig. A

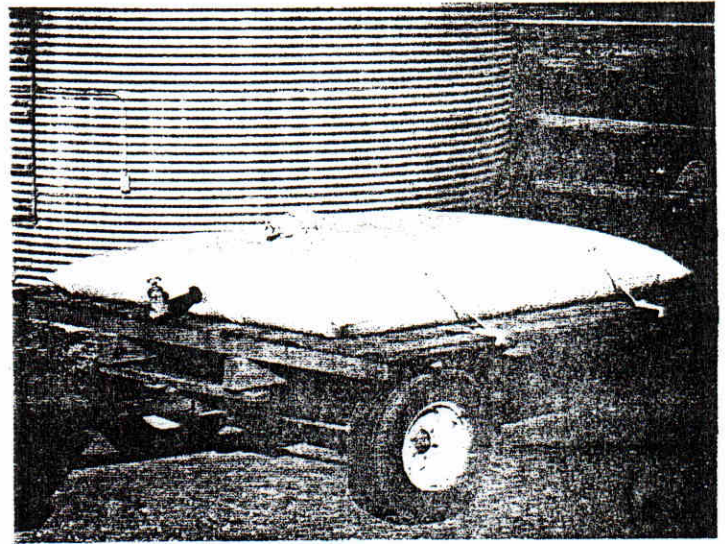


Fig. B

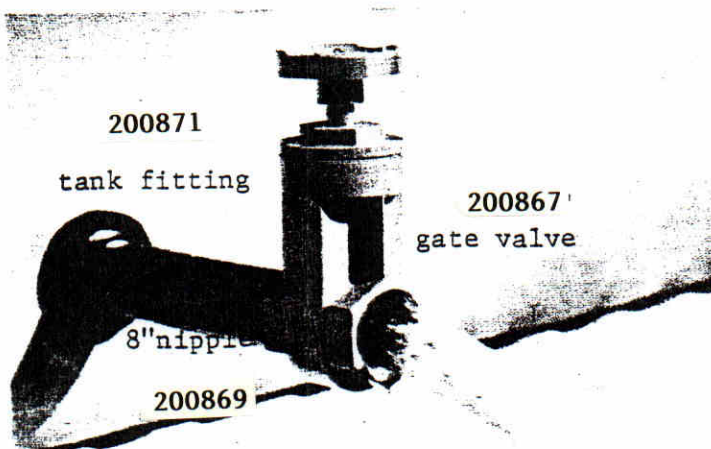


Fig. C

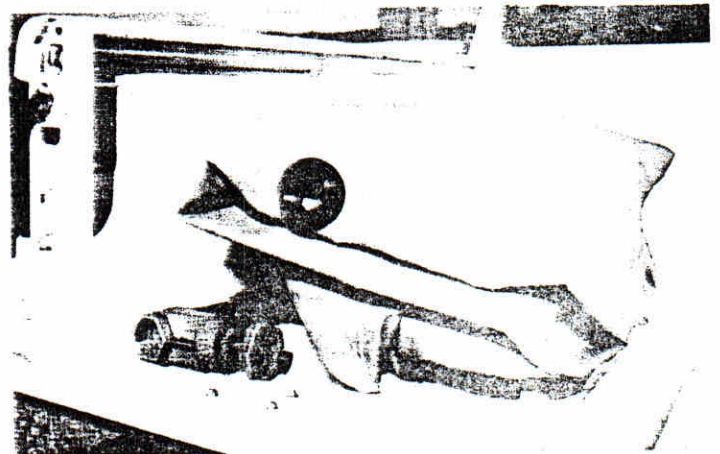


Fig. D