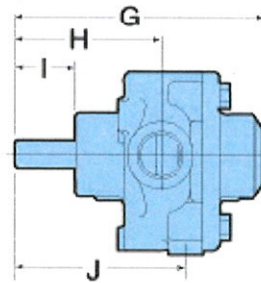
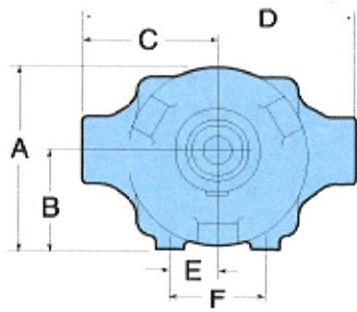


6500



### Dimensions

Standard	Metric
A. 4 $\frac{3}{16}$ "	104 mm
B. 2 $\frac{1}{32}$ "	56 mm
C. 3 $\frac{1}{16}$ "	78 mm
D. 6 $\frac{1}{8}$ "	156 mm
E. 1 $\frac{1}{16}$ "	27 mm
F. 2 $\frac{1}{8}$ "	54 mm
G. 5 $\frac{1}{32}$ "	142 mm
H. 3 $\frac{3}{32}$ "	83 mm
I. 1 $\frac{3}{8}$ "	35 mm
J. 3 $\frac{7}{8}$ "	48 mm