

OSHA Standards and Regulations

Logging, farming and work environments such as grounds maintenance that require the use of chain saws and other power equipment tools are among the occupations with the highest incidents of occupational injuries. Not only is the incidence rate high in these industries, but the severity of the accidents that occur are often very dramatic. The U.S. Consumer Products Safety Commission reported over 42,800 chain saw injuries to both professionals and amateurs during 1994.

OSHA's Logging Operation Safety Rule (29 CFR 1910.266) became effective on February 9, 1995. The logging Rule covers all aspects of logging: work rules and procedures, equipment and equipment maintenance, training, record keeping, safe work practices and the mandatory use of safety equipment. The ruling makes the employer responsible for providing the safety equipment and enforcing its use. The logging standard specifically requires the use of the following equipment by chain saw operators: gloves, boots, leg protection, safety caps, hearing, eye and face protection and first aid kits. All this equipment (except boots) shall be provided by the employer at no cost to the employee.

New 2008 ASTM Leg Protection Standard

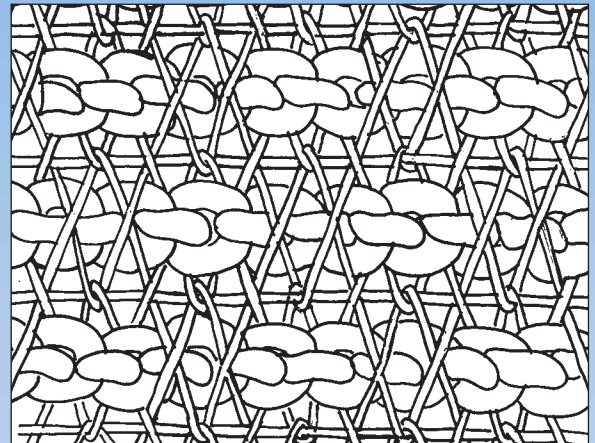
In 2008 new regulations governing test standards for Chainsaw Leg Protective Clothing have been enacted. This revision to ASTM F-1897-2008 increases the performance requirement for chainsaw test speed, to 2750 fpm (from 2500 fpm). Elvex's R&D program to meet higher chainsaw speed requirement, began years ago; with the objective to increase cut resistance, while providing comfort, and limiting excess weight. Through earlier experience with commercial products, we had already established a performance threshold exceeding 2500 fpm. Now with ASTM's standard change to 2750 fpm, Elvex's design is fully developed, tested, and proven to increase cut resistance for chains operating at the higher contact speed. The result is a new generation Elvex ProChaps tested by Underwriter's Laboratories in accordance with ASTM F-1414, Measurement of Cut Resistance to Chain Saw Lower Body Protective Clothing.

Prolar™

Prolar™ Protective Pads

Prolar is Elvex brand name for our exclusive chain saw protective pad development. Prolar is not a static product, but is going through continuous development, in order to improve the compromise between comfort and performance. The Prolar protective pads combine a unique fibre composition with special weaving to create one of the most effective chain saw protective pads on the market. The unique "explosive" action of Prolar works by jamming the chain against the bar and the sprocket. Prolar combines light weight and flexibility for superior user acceptance with highly effective protection.

Elvex Prolar pads have been tested in accordance with the APA and ASTM Standards, by Underwriters Laboratories. The Prolar pads have passed the performance requirements, including the 2,750 feet per minute chain stopping capability. This test establishes a pass or fail and does not establish maximum performance.



CHAIN SAW PROTECTION

ProVest™

Elvex ProVest™

Elvex ProVest is the first genuine chain saw resistant upper body protection. It is intended to offer limited protection from chain saw kick back injuries. Arborists, landscapers and utility company employees are the potential beneficiaries of this protection.

- The upper body protection concept has been patented, U.S. Pat. # 5,101,511.
- Prolar protection is provided on the shoulders and the front of the chest. The water resistant sleeveless jacket has extended shoulders and large front and back vents. A longer back panel helps repel water and debris.
- An inside zippered pocket is provided.
- High visibility orange top and blue bottom makes an attractive looking product. The vest is made from 420 denier Nylon.

Available in Medium, Large and Extra Large: JE-50M (38"-40"), JE-50L (42"-44"), JE-50XL (46"-48").

ProChaps™

90 Series ProChaps™ with Calf Protection

Elvex best selling chap model has sold in hundreds of thousands. A long list of unique standard features explains the popularity of this design.

- Patented asymmetric design provides extended protection on the left side of each leg, where most injuries occur (US Pat. #5,095,544).
- The 90 series chaps conform to ASTM requirements as well as APA Class A requirements.
- Lightweight, flexible and strong 420 denier Nylon cover fabric.
- Easy on, easy off apron-style design.
- Quick release buckles for waist and legs.
- A zippered front pocket is a standard feature not found on other brands.

Available in safety orange color in four lengths: JE-9028, JE-9033, JE-9036 and JE-9039. The last two digits of the product number indicate the length in inches, waist to bottom, not the inseam.

94 Series ProChaps™

Elvex 94 Series ProChaps, are designed for the professional chain saw user. In addition to meeting the requirements of the ASTM Standard, Elvex 94 Series chap maintains the quality and features, which have made the Elvex brand name famous.

- Lightweight Prolar protective pads add comfort and prevent heat buildup.
- Patented asymmetric design
- 1,000 denier Cordura Nylon cover fabric, which is more abrasive resistant.
- Three sets of leg straps and buckles help the stiffer cover fabric conform comfortably to the legs.
- A zippered front pocket is standard.

Elvex 94 Series ProChaps are available in orange safety color in 28, 33, 36 and 39 inches lengths, model numbers JE-9428, JE-9433, JE-9436 and JE-9439. The last two digits of the product number indicate the length in inches, waist to bottom.



ProChaps™

91 Series ProChaps™ with Calf Protection

Certain work conditions may require extra precaution, with regards to lower leg protection. Elvex ProChaps with wrap around calf protection, provide the solution for these situations.

- This model maintains all basic features of Elvex 94 series chaps, while it also maximizes lower leg protection.
- The outer shell is made of 1,000 Denier Cordura nylon, designed for durability even in severe environments.
- Each leg is secured by a total of three sets of buckles. The wrap-around section, below knees, is secured by two sets of buckles.

Available in three sizes: JE-9133, JE-9136 and JE-9139. The last two digits describe the total length of the garment, from waist to bottom.

ArborChaps™ One-size-fits-all

Users have long asked us to provide a lower cost chap, and the trade has frequently requested a universal size chap to help control their inventory. The ArborChap may just be the answer to these requests, since it addresses both of these concerns. We stripped the ArborChap of some features such as the zippered pocket, but we maintained all the safety features that really count.



- Patented asymmetric design for better protection where most injuries occur.
- Elvex famous Prolar protective pads, no compromise on safety.
- Universal size, three sets of belt loops allow length adjustment from 33 to 36 inches.
- Easy on, easy off apron style design, with two sets of leg straps and buckles.
- Hunter green 420 denier Nylon cover fabric, with attractive black Nylon edging.

Available in one universal size only: JE-8000, Elvex ArborChaps



ProGuard™

ProGuard™, Loggers Safety Caps

Elvex ProGuard Loggers Safety Cap is a uniquely integrated system, which provides protection for head, face and hearing in a workable and practical solution. Elvex offers several different ProGuard systems, based on different configuration of safety helmets, earmuffs and face shields. Observe that appropriate safety glasses are always required in addition to any face protection.

ProGuard™, CU-25, our Economy Unit

This is our most economical logger's safety helmet, and it is based on an orange six point pin-lock suspension safety cap (SC-50-6P), medium profile ear muffs (HM-2530) with 24 dB NRR, our Visor bracket (VB-30) and a steel visor (SV-70).

ProGuard™, CU-30R, for the Pro

This system has been the professional's choice for many years. An orange six point ratchet suspension safety cap, with nylon webbing (SC-50-6R), that gives an extremely secure fit and balance, is appreciated by the full time user. A black low profile ear muff (HM-2030) with 25 dB NRR gives an aesthetically pleasing contrast to the orange safety cap. This safety helmet comes with Visor Bracket (VB-30) and nylon visor (NV-70).

ProGuard™, CU-30L

This system has the same specifications as CU-30R, but is equipped with a Lexan face shield (FS-12L). This face shield offers impact resistance, and is intended for power tools that may send high velocity objects flying in the direction of the operator.

ProGuard™, CU-60R, Top of the Line

Our top of the line ProGuard System comes equipped with a six point ratchet suspension safety helmet (SC-50-6R). This model is equipped with Elvex heavy duty cap-mount ear muffs (HM-6030), which provide a Noise Reduction Rating of 27 dB, and Visor Bracket (VB-30) and nylon visor (NV-70).

Safety Warning

The nylon and steel visors (NV-70 and SV-70) do not provide high velocity protection. For high velocity protection, choose a Polycarbonate face shield, i.e. model CU-30L. ANSI Z87 requires separate eye protection, suitable for the situation, in addition to any face shield.



CU-25



CU-30R



CU-60R